

NEWS RELEASE

For immediate release 27 October 2017



THE MAKER'S ART

ANNOUNCING THE LAUNCH OF OUR BRAND NEW COLLECTIONS

Available now in the Heath Robinson Museum shop

As well as offering a range of products complementing William Heath Robinson's work, the shop at Heath Robinson Museum sells a selection of one-off items, designed and handmade by acclaimed, locally-based artisans.

The Maker's Art is a contemporary range of artworks, jewellery, ceramics, stoneware and printed images that complement the imagination and enchantment of Heath Robinson's work. The makers change every six months, adding more valuable creative partnerships and leading to a distinctive decorative art marketplace at the Heath Robinson Museum.

Participating in the **third** programme of The Maker's Art, running now until April 2018, are the jewellery designer **Jane Pomiankowski** from Northwood, printmaker **Ann Burnham** who is based in Pinner and the ceramicist **Manjula Muir** from Chorleywood.

Jeannine Lawder, curator of The Maker's Art, says "We are thrilled that these amazingly talented artisans have brought their stylish and beautiful ranges to support the Heath Robinson Museum. We are also delighted that Kubera Wealth are sponsoring the launch of the new ranges."

Jane Pomiankowski The 'Spirit' Collection

The highly creative jewellery designer **Jane Pomiankowski** brings her remarkable hand-made silver jewellery that combines the best of traditional silversmithing and textile techniques with modern ideas.



Jane's work explores many possibilities, from large ruffs made by crocheting with silver and coated copper wire to texturing sheet metal with lace, leaves and wallpapers.



The V&A Museum has already exhibited her work five times.

Heath Robinson Museum, Pinner Memorial Park, Pinner, Middx HA5 1AE
heathrobinsonmuseum.org ✉ pressoffice@heathrobinsonmuseum.org

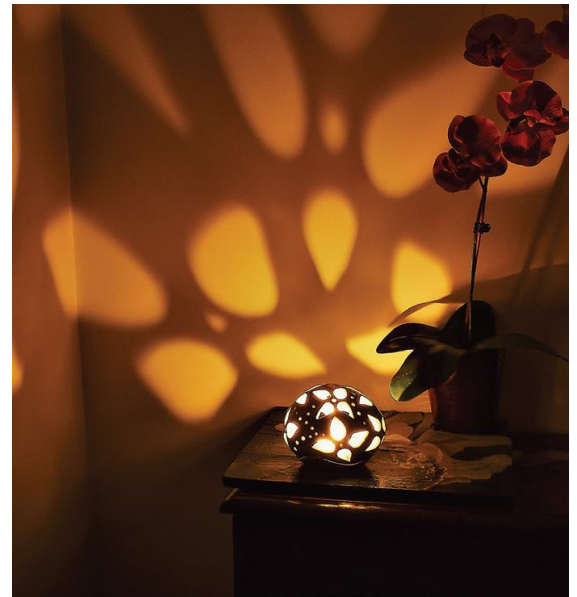


Manjula Muir

The 'Oasis' Collection

An experienced ceramicist and teacher, **Manjula Muir** has developed her own individual style across Raku, Earthenware, Porcelain and Stoneware. Her work blends eastern mysticism and western design.

Manjula's evocative Oasis collection of Stoneware brings a range of functional jugs, bowls and lanterns, including distinctive hand-carved tea-light lanterns.



Ann Burnham The 'Viewpoint' Collection

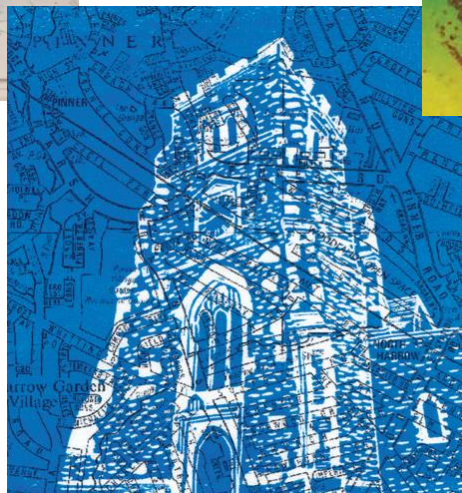


Renowned printmaker Ann Burnham brings some beautiful works from her Viewpoint collection.

Ann's work is inspired by a fascination with the textures and patterns around us.



Ann has used her range of printmaking techniques to translate the inspiration of Heath Robinson's work into her own artistic style, depicting landscapes, local iconic buildings, fantasy fairies and a mechanical cartoon that highlight the breadth of her talent.



Heath Robinson Museum, Pinner Memorial Park, Pinner, Middx HA5 IAE
heathrobinsonmuseum.org ✉ pressoffice@heathrobinsonmuseum.org

Notes to Editors

heathrobinsonmuseum.org

The first purpose-built museum in Greater London for over 40 years, dedicated to showcasing the work of the world-renowned artist, illustrator, humorist and social commentator William Heath Robinson (1872-1944), opened in October 2016 in Pinner Memorial Park, north-west London. Heath Robinson lived in Pinner from 1908-18, some of the most productive years of his life.

This project is delivering:

- A permanent home for the Heath Robinson collection of original artwork and other artefacts
- The only museum dedicated to Heath Robinson, hosting the largest collection of his original works
- In addition to the permanent exhibition chronicling Heath Robinson's life and works, a rolling programme of special themed exhibitions
- For schools, colleges and people of all ages, a comprehensive programme of formal and informal learning: thought-provoking and entertaining, reflecting the style of the man himself.

The West House and Heath Robinson Museum Trust is a registered charity which restored West House in Pinner Memorial Park for community use. The Trust is a partnership between local Pinner people and the William Heath Robinson Trust, custodians of the artist's work.

To develop the new Museum, Trustees received funding from the Heritage Lottery Fund of £1.3m.

Donations are welcome on <https://mydonate.bt.com/charities/heathrobinsonmuseum>

Background to the William Heath Robinson Trust

When Heath Robinson's daughter Joan died, her husband wanted her collection of her father's work to be kept in public ownership. As a result the William Heath Robinson Trust was formed in 1992.

The original collection included about 500 pieces of original art work together with an archive of letters, association copies and special editions of the books that he illustrated, proof prints, advertising booklets and ephemera. The National Heritage Memorial Fund and the Art Fund grant-aided the William Heath Robinson Trust in 2015 to purchase some 400 additional important works for the Museum, bringing the collection to nearly 1,000. It is the only substantial collection of the artist's work in public ownership.

Use of icons and images

A range of authorised Heath Robinson images are available in a range of format. Please talk to our media team about your requirements.

Media contacts

Sharon Pink, PR Manager

✉ sharon@heathrobinsonmuseum.org ☎ 020 8582 2513 / 07876 228 254

Anna Bradshaw

✉ anna@heathrobinsonmuseum.org

Heath Robinson Museum, Pinner Memorial Park, Pinner, Middx HA5 IAE
heathrobinsonmuseum.org ✉ pressoffice@heathrobinsonmuseum.org

